

We are not clumsy.

Session 18 of 28 December 2017 – English translation - Original Dutch.

Place: Mezza Verde in Belize.

Received by Wivine.

Visitor: **Life Carrier on Urantia** :

Life Carrier Dear friends, many things have happened on your world since we prepared the first life patterns and protoplasm on Urantia - your planet - to produce life that contained all the characteristics of plants, marine, animal and human life.

Man has never been an animal. From the beginning, the protoplasm contained all the characteristics to bring forth the **first primitive man** with all the varieties of physical features that appeared later.

Your planet is unique in all **Nebadon** - your local universe, which is part of a larger Superunivers. It offered many possibilities to experiment with new forms and variations of human life.

Don't be misled, we are not amateurs who make fun mixing ingredients in a container to see what comes out. We are not clumsy. Everything we do is thoughtful and we always strive to improve, perfect and increase the degree of perfection of what we make.

It is important for us, the geneticists of Nebadon - the **Life Carriers** – to be allowed to do so to continually improve the physical forms so that they become a better platform for:

- 1) primitive men to receive faster their **human mind**.
- 2) bring human souls faster to spiritual development once they are inhabited by a Fragment of God or **Thought Adjuster**.

Material planets are there to create souls. Souls that can develop spiritually to inhabit the billions of beautiful celestial universes. Some of these souls are intended to fuse with their **indwelling Spark of God** for the purpose of reaching **Paradise**. Urantia, is one of those material planets destined to bring forth humans

possessing those genetics that will allow them to develop a soul capable of [fusing](#) with their God Fragment.

The **Melchizedeks** asked us to develop a type of material beings who would have a cerebral brain, a heart brain and a nervous system that would be able to connect after many evolutionary stages to the type of **human mind** that allows them to reach fusion with their [Thought Adjuster](#), even already here on earth.

To give man the impetus to go in search of God, we have put in place a genetic code in his DNA and in his brain that drives him to seek his divine origin and divine purpose. Who am I? Where do I come from? Where am I going?

This process of human evolution [is still going on](#) and continues to adapt and develop: as well in the physical domain as in the realm of mind and awareness.

Being able to learn by reacting to the environment and remembering what one has learned is the **gift of the "human mind"**. It does not come from the physical body.

But the physical body must have the ability to react to the **human mind** received from **Mother Spirit of Nebadon**. Otherwise, no intellectual, moral, or spiritual progress would be possible.

This was our task and we did it right.

The first [primitive humans](#) able to receive this "human mind" were called [Andon](#) and [Fonta](#) by the Celestials.

They had very dark brown eyes, almost black, a very dark skin and black hair. This was due to the "**melanin** variant" they possessed. Melanin is a pigment that determines skin color, as well as the color and quality of eyes and hair. Melanin is very important for capturing the ultraviolet rays of the sun that provide them the much-needed vitamin D. Their variety of melanin was very suitable for tropical, hot and sunny climates and offered excellent skin protection against more dangerous sunlight.

After leaving behind their mortal bodies their souls continued their evolution on the [7 Mansion Worlds](#), later on the Morontia worlds to finally fuse with their God Fragment on [Jerusem](#) - capital of your planetary system [Satania](#).

We tell you this story once again so that you would understand that every human being, as primitive as his intellectual capacity and as primitive his mind can seem to you, is inhabited by a Fragment of God from a very young age since the arrival of [Jesus Christ Michael](#) - on your world.

As a human being, you have no ability to know if a human being is inhabited by a Fragment of God. Except if "HE" wants you to know it by showing a white light around the person's head and provided you have abilities that go beyond the vision of your physical eyes to see it.

Even Jesus, who is the [Almighty Sovereign of Nebadon](#) and therefore of your planet, will never destroy any "human life" and will not pronounce a death sentence without receiving the permission of the Judges of the Superuniverses and the [Ancients of Days](#).

Should I be clearer? Everyone understands what I'm talking about here?

OK, let's continue!

From the beginning, in the implanted protoplasm, there was the possibility of bringing forth humans with different skin color, different physical appearances in size, face features, skulls, different types of eyes, hair, as well as the ability to adjust skin color to the sun intensity.

There have never been any yellow, blue, red, green, or orange men walking around on your planet. All this comes from an old popular classification, from the time when genetics was only in its infancy.

Why these differences in physical appearances?

It is important that the skin is able to adapt to light intensity and ultraviolet light from the sun according to the inhabited regions. Your planet has many climatic regions with different vegetation, ranging from forests, open wide plains to arid mountains with more or less sun. "Melanin pigment" plays a major role in the color and quality of skin, eyes and hair for environmental adaptation. The different types of hair such as straight hair, curly hair or dreadlocks play a role in adapting to different climates.

Black eyes are much stronger and give a much better view. Eyes have an important function and are very close to the brain and under the epiphysis (*third*

eye or *chakra* 6). A high content of melanin also offers the ability to develop extra-sensory perceptions, perceptions that go beyond the sight of physical eyes.

Something important in a society that lives in harmony with nature, animals and seasons and in the quest of God, like it was supposed to be. Technological civilizations are from men.

Another reason is consanguineous marriages between groups of isolated people or families. This causes a recession or genetic decline and this is avoided by the mutual mixing of different migrant populations.

It is a well-known phenomenon in Europe where the powerful clans - the nobility, married a lot by inbreeding to increase or preserve their power and fortune. This brought physical deformities, blood diseases, mental disorders, to produce even real dangerous psychopaths. The same thing has happened with the ancient Mayan rulers and priests as well as in other more ancient civilizations. Sooner or later, decline occurs and they disappear.

Your science has found for the moment two types of melanin pigments.

One (*pheomelanin*) gives the skin a range of colors from yellowish, orange, reddish brown to dark brown depending on the intensity of the sun. Few sun will make skin clearer with this type of melanin, even giving permanent pale skin after generations of adaptation to the environment.

{Note Wivine: Apart from melanin, there is also carotene, collagen and in a pale skin color, the red color of the blood as a determining factor for skin color. Food changes have also an influence on skin color and can also produce genetic variations.}

Then you have the phenomenon of "albinos". "Albinos" have a genetic deviation that prevents them from producing the "pigment melanin". The intensity of this deviation can vary, there is not one type of "albino" and it can occur in all human variants. Although more frequently in people with "eumelanin pigment" as is the case in sub-Saharan Africa.

All these people can blend and produce offspring with different skin colors, eye color, hair color, hair types and face features.

The color of the skin, the shape of the skull and length are external aspects that have nothing to do with intelligence and mental development. They are only

useful for environmental adaptation. Some melanin variants give you the option of lightening the skin whether you are living further north with less sunlight or to darken when you are in warmer climates and need less clothing. Sunlight is the main producer of vitamin D that men needs and the regulator for this solar uptake is the type of melanin. Even people with pale skin retain the ability to "tan" their skin in the sun.

However, this is not possible for "pure albino's", which are severely handicapped in the sun and just as light-skinned people living in low-sunlight areas are affected by vitamin D deficiency. They have to find their vitamin D in their diet. "Albinos" have often weaker eyes and skin diseases. Their skin color is usually white or very pale. Their eyes vary from blue to yellow-green, purple, violet or red-pink. They have white, blond-golden hair or coppery hair ranging from orange, hazel to dark red. Many "albino" types have blended with other types of humans over millennia, bringing forth new types of external features.

The third reason is that meeting the other, another type of people, promotes altruism in the long term.

One day, the spiritually evolved man will realize that all men are brothers and sisters, inhabited by God and will consider the different external, cultural and religious aspects as enriching.

All humans are fundamentally genetically uniform. This means that they can all blend and therefore produce new variants.

We have never programmed higher and lower human species. Humanity is "one specie" and the process of evolution of mankind is still not finished. You will evolve further and you will physically adapt to receive new higher consciousness abilities by receiving a higher mind. This will require an adaptation of your DNA, your cerebral brain and your heart brain, as well as your nervous system.

You have all received the same Divine "makeup":

- DNA and a brain that give the first impulse to search a higher Creator,
- all receive a unique "personality" from God, a [Spark of God](#), and a [human mind](#) from [Mother Spirit](#) of your local universe that can evolve.

- A heart that evokes feelings ranging from hate, anger, irritation, fear of danger and the stranger to ... compassion, altruism and disinterested service starting with the family, the clan, the village, the city, the country and eventually all humankind.

- A "free will" that allows man to make choices. That was God's plan: God desires souls who turn to Him of their own will and conviction.

In every human cell, there is a constant thirst for improvement, a constant need for better adaptation to the environment. This need is also reflected in the search for God, to accomplish eventually the higher purpose of life which is to attain the highest spiritual perfection here on earth that is possible. It is on this need that the Thought Adjuster or God Fragment will act in the first place.

All of you have a unique destiny and it is not to become the physical, intelligent bionic superman or superwoman who does not believe in God that Lucifer and Satan have mirrored you in the past and that their human followers still shimmer you and dream of.

Your destiny is to become the GOD-MAN.

The GOD-MAN who will be so much attuned to the Divine Will that he will be able to create with the Power of God in combination with his own mind abilities already here on Earth.

The Lucifer rebellion has done a lot of damage and yet you don't know everything. It doesn't matter. It is not a necessity for you to know.

Adam and Eve didn't accomplish their task of improving man genetically. They should have improved your immune system and some other stuff. Their bodies were composed on arrival with, among other things, the DNA of the local population because their offspring had to blend in time with men. The populations of that period were not of the "white or albino" type described above and we will not say more about it.

Adam should have become the chief of your world government as an intermediary between the people and the seraphic planetary government. It will not happen which doesn't mean you are beyond help.

Even though a lot of things have gone wrong here and it still does not go right, do you think God cannot fix it? That Jesus is powerless?

Yes, they can! Rest assured! Jesus and His Father have a plan to help you achieve your spiritual goals, improve your DNA and strengthen your immune system. They will do their part – and you will do yours.

God knows only one type of personalities: those who know and love Him and that means that those who know God will see God in the eyes of every person they meet.

Goodbye, my dear friends.

END.

GROUP MEZZA VERDE

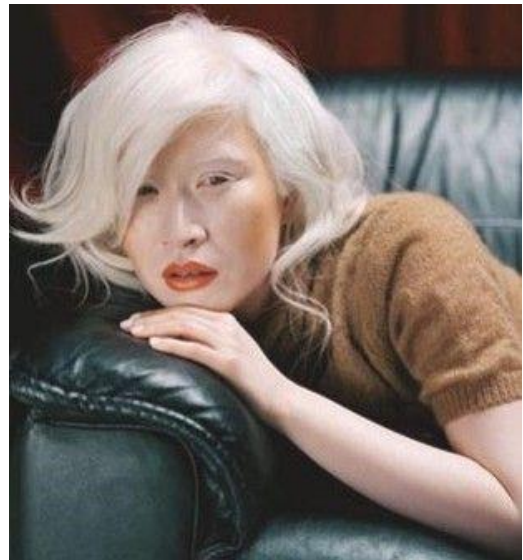
<http://www.mezzaverde.com>

For explanations of the words in blue, see the Urantia Book.

Maya Albino (left)



Chinese Albino (right)



African albino girl



African albino boy





Nuristani father and son: The Nuristani are an original Albino people of the Hindu Kush mountain region of Eastern Afghanistan and the Chitral area of Pakistan.



Maria's Real mother in Romania: Sasha Ruseva, who is holding her little sister, name unknown, who is also an Albino

Albino girl from Romania.



Bathi albinos from Pakistan with their dark colored parents.

Irish Albino (left) ancient generation Irish albinos (middel, right)



Sibérian albino girl – below with her sister.



Top model Russian albino (left)



Maori albino (right)



YAZIDI- EZIDI- KURDES –local population– not European. Are now being decimated by Daesh/ISIS.



ALBINO EYE COLORS





END.